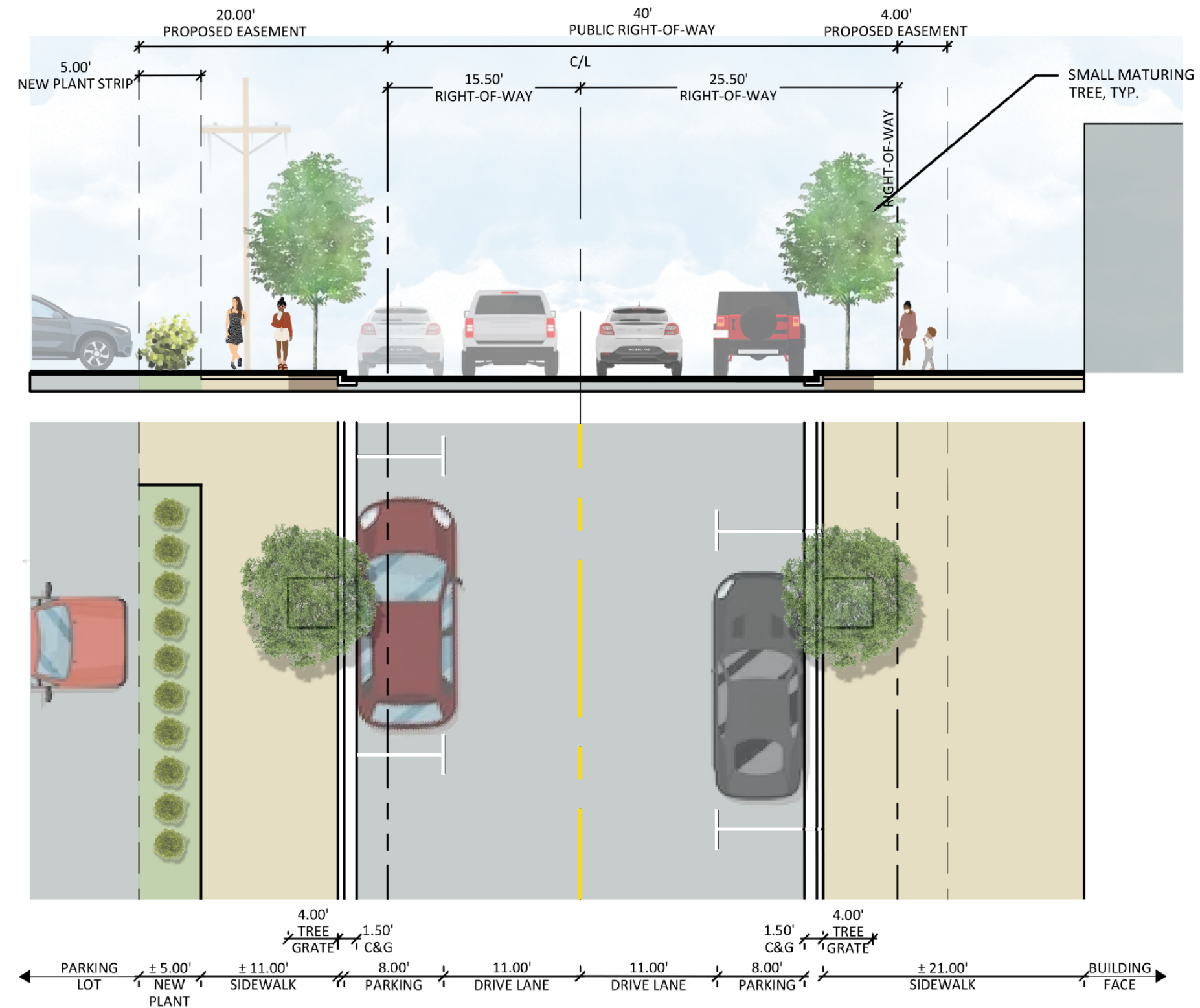
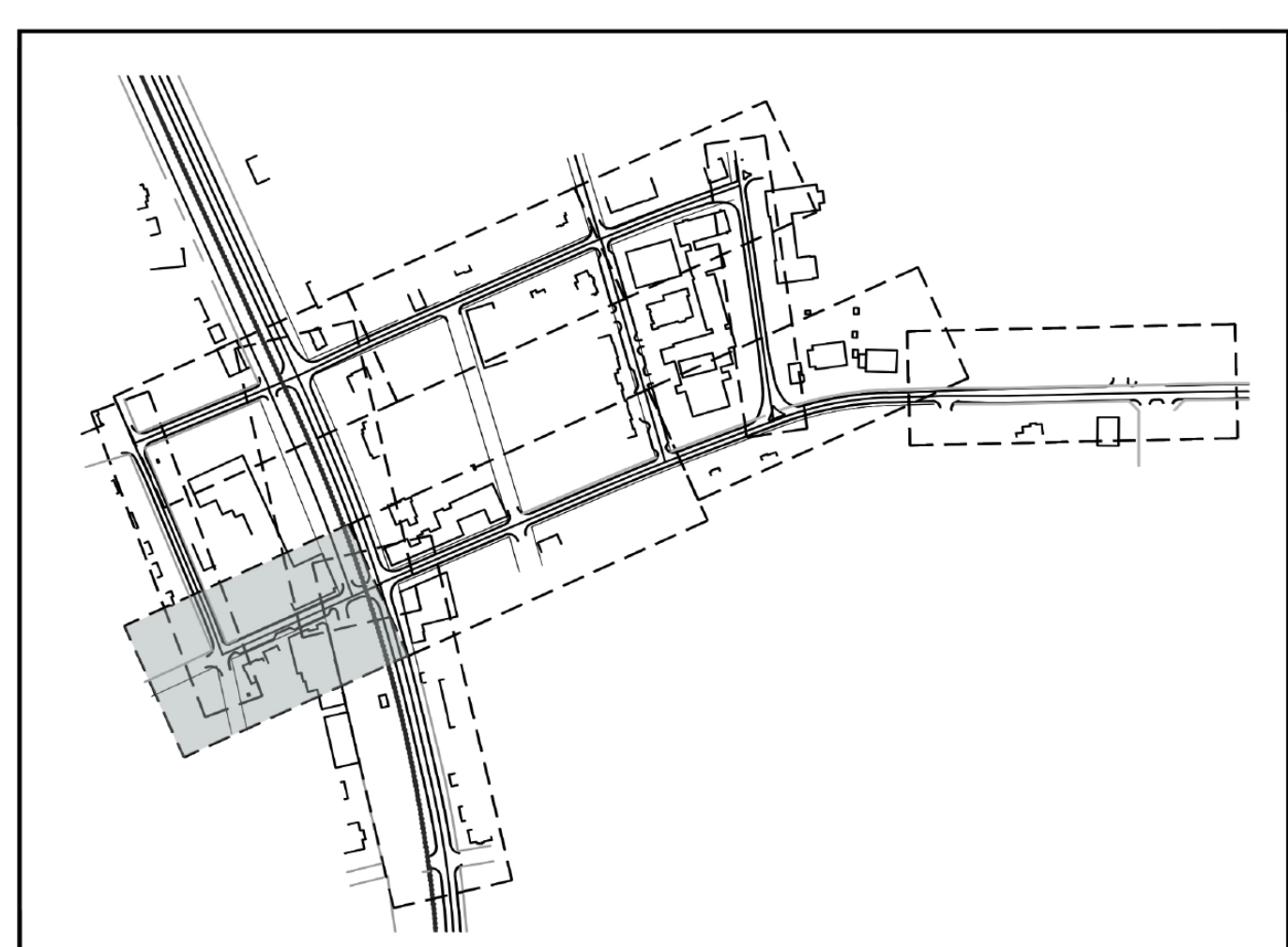
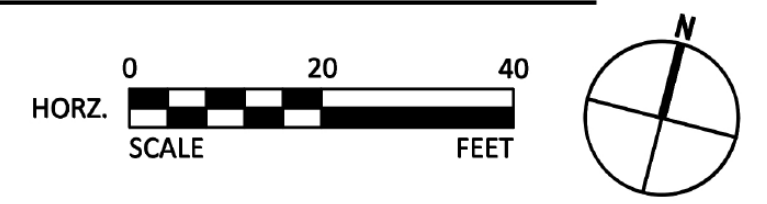


WEST CURTIS STREET, STA: 35 + 00 - 39 + 83

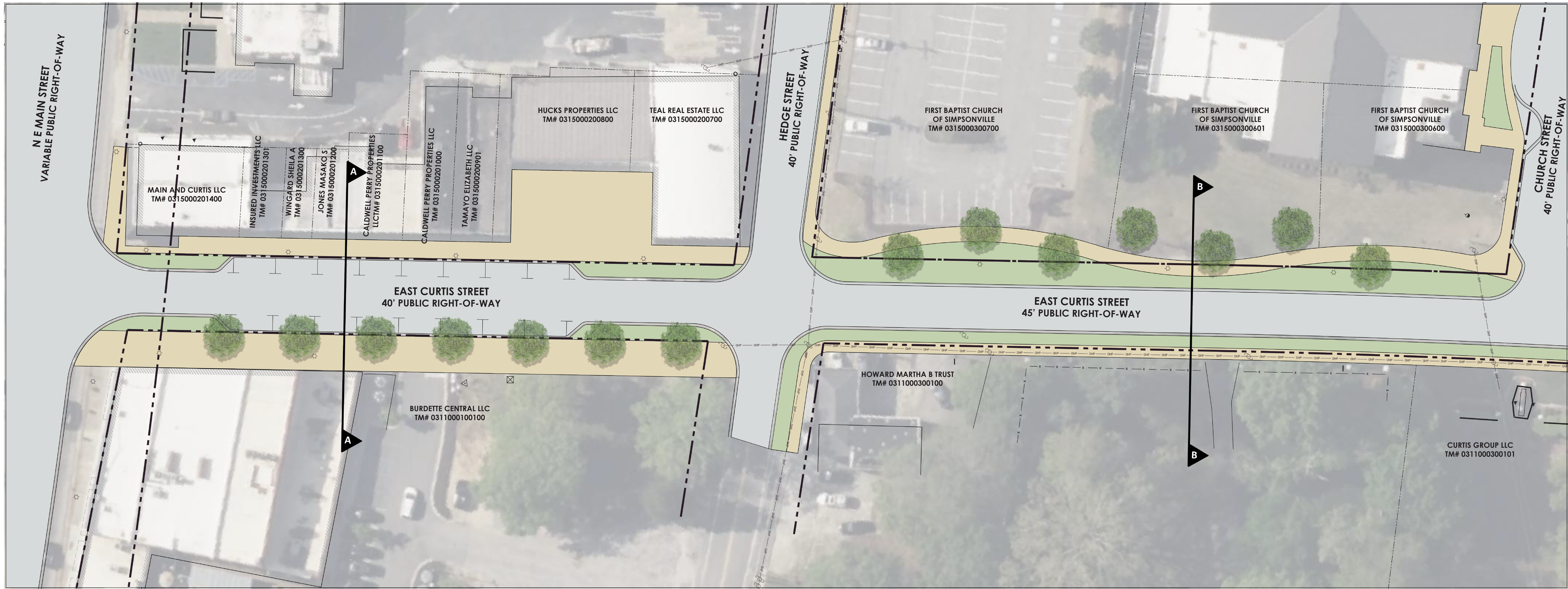


WEST CURTIS STREET - PROPOSED STREETScape SECTION A-A SCALE: 1" = 10'

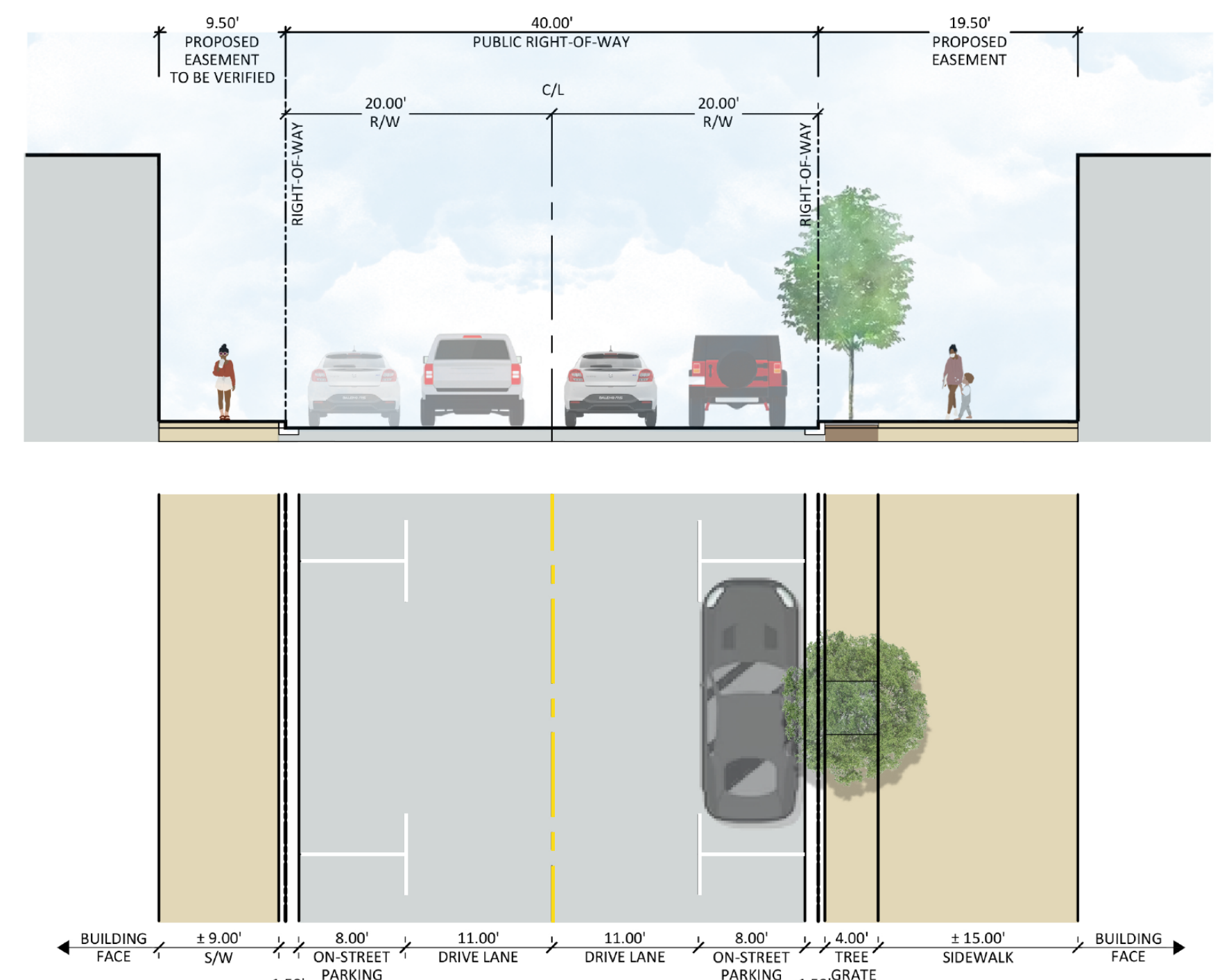
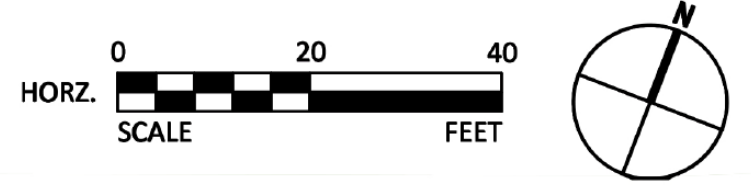


SIMPSONVILLE STREETScape
WEST CURTIS STREET TYPICAL CROSS SECTIONS
 SIMPSONVILLE, SOUTH CAROLINA
 10.18.23

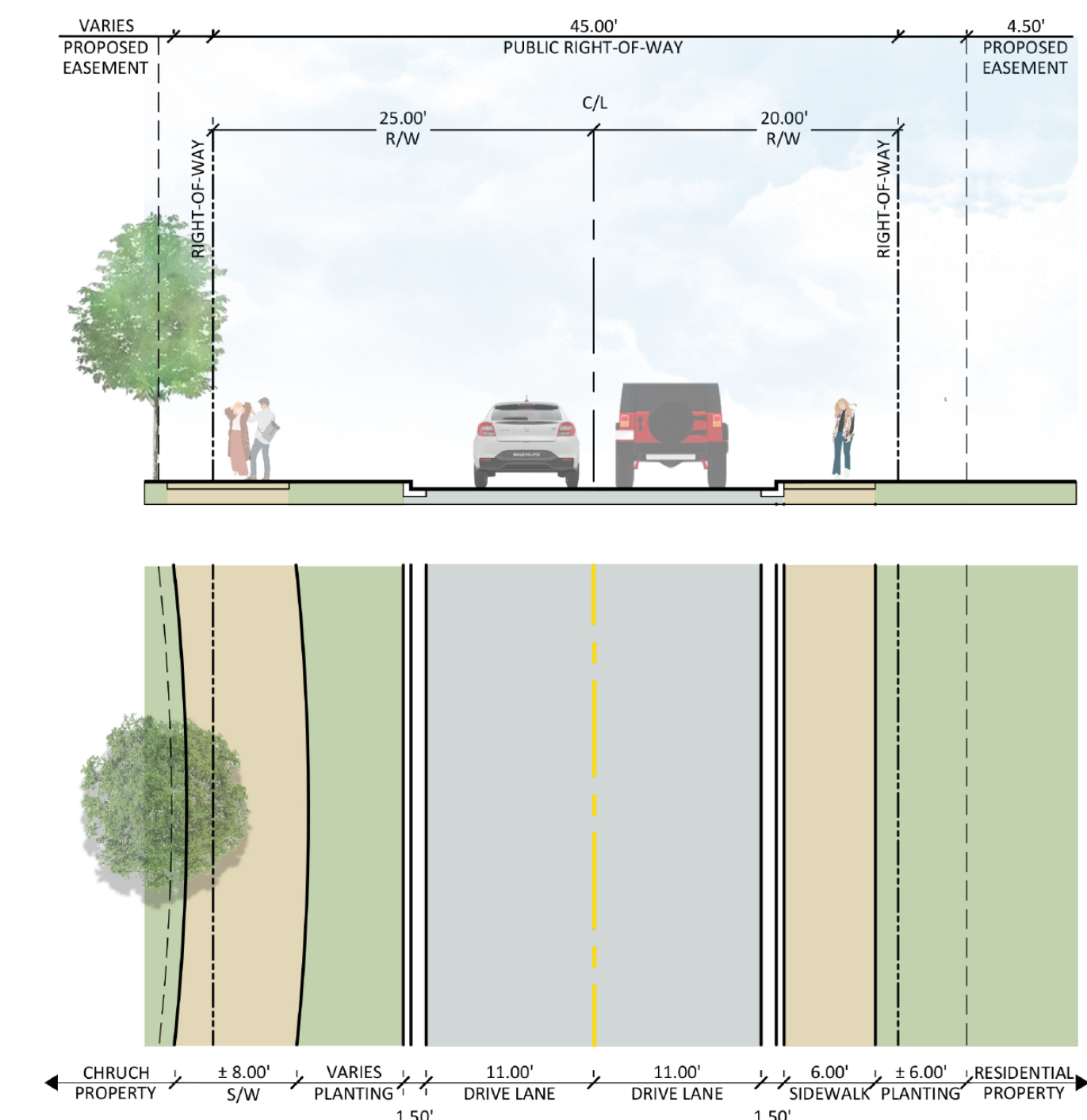
VICINITY MAP N.T.S.



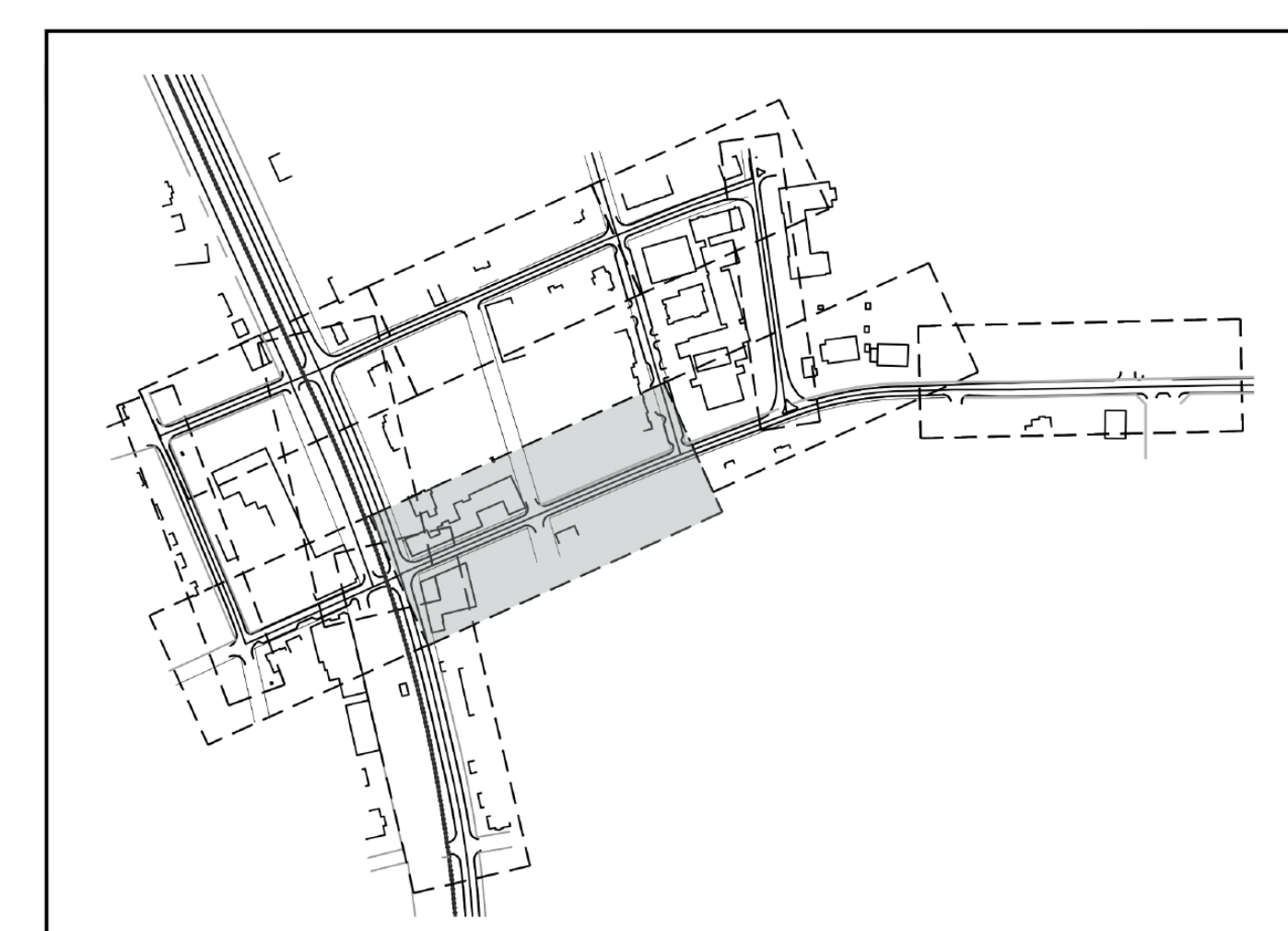
EAST CURTIS STREET, STA: 8 + 00 - 14 + 00



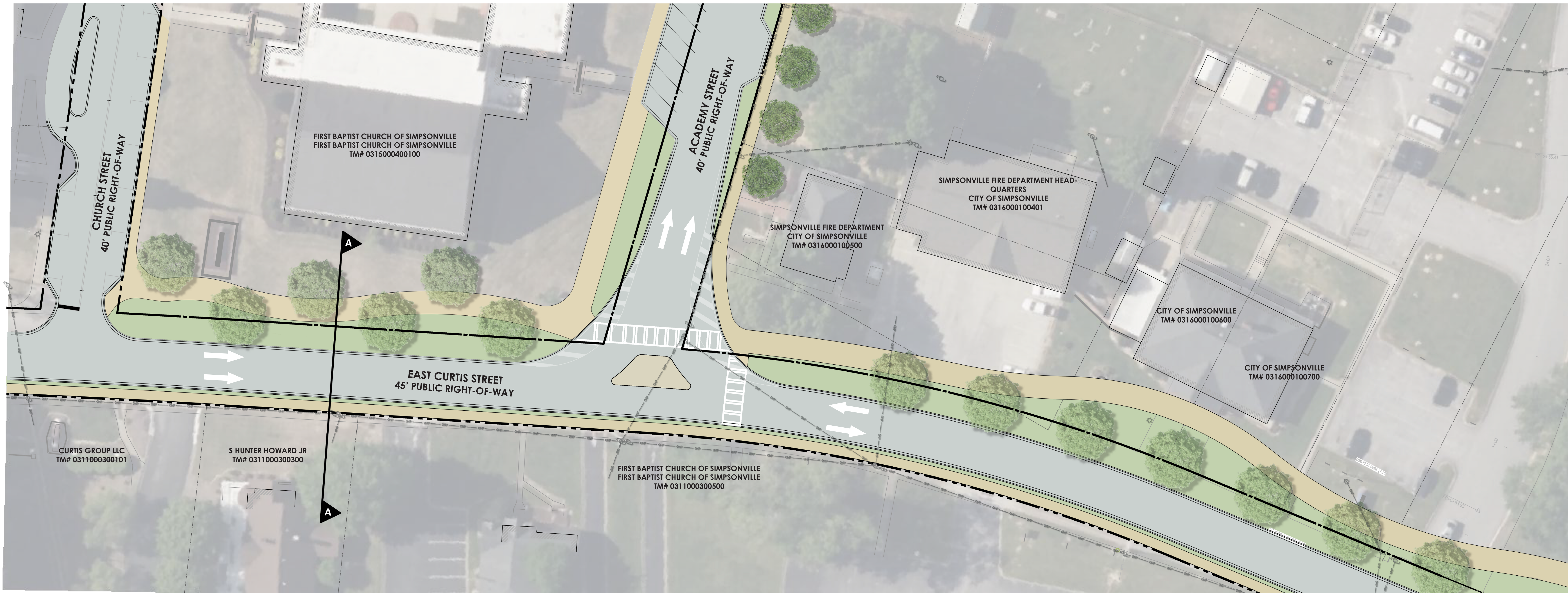
EAST CURTIS STREET, PROPOSED SECTION:
SECTION A-A SCALE: 1" = 10'



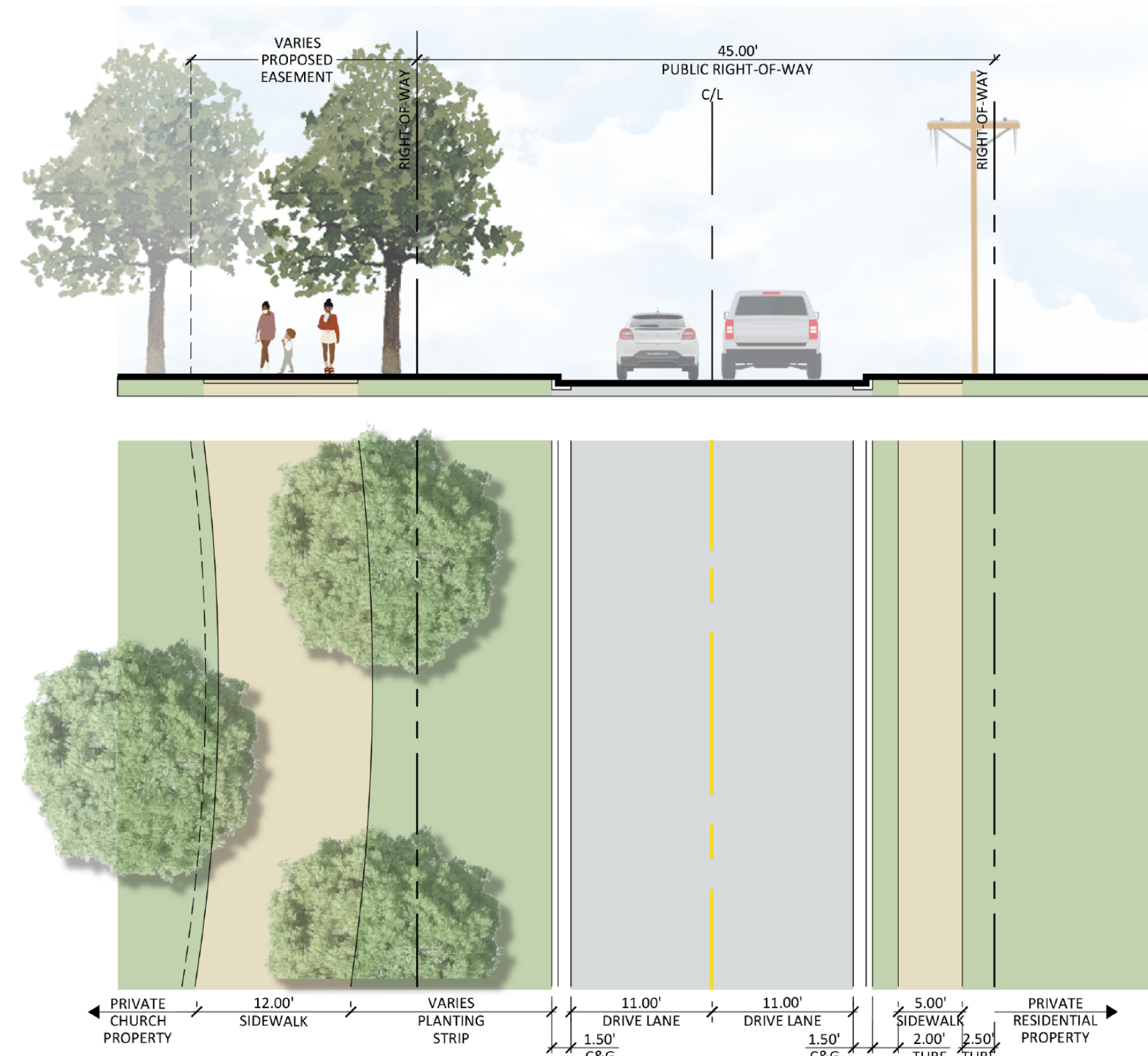
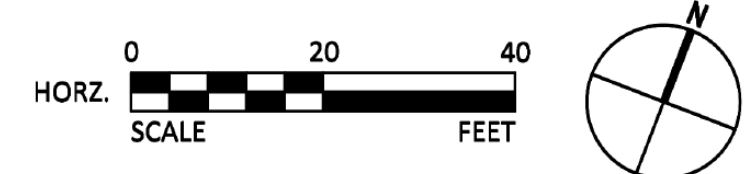
EAST CURTIS STREET, PROPOSED SECTION:
SECTION B-B SCALE: 1" = 10'



SIMPSONVILLE STREETScape
EAST CURTIS STREET TYPICAL CROSS SECTIONS
SIMPSONVILLE, SOUTH CAROLINA
10.18.23

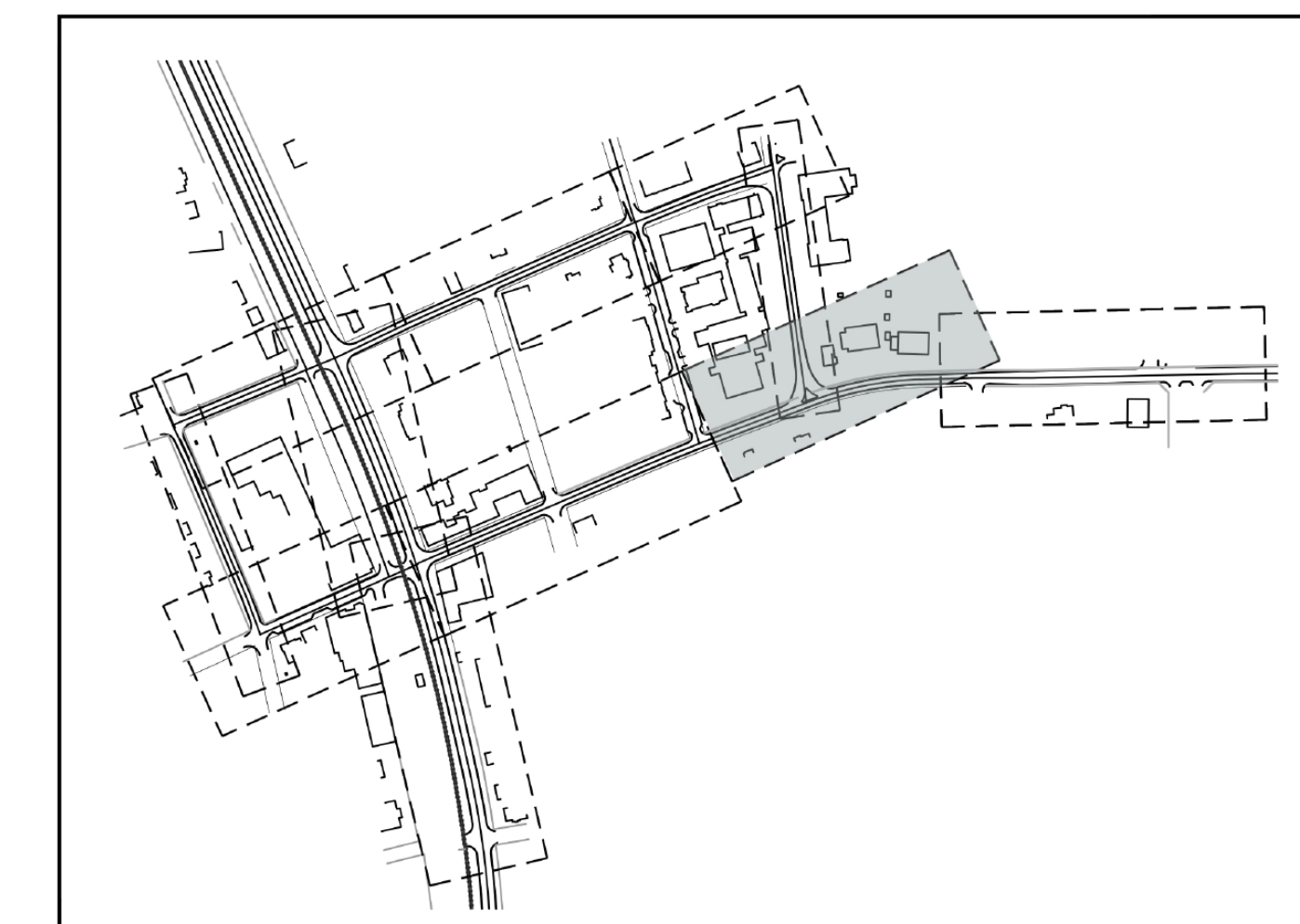


EAST CURTIS STREET, STA: 8 + 00 - 14 + 00



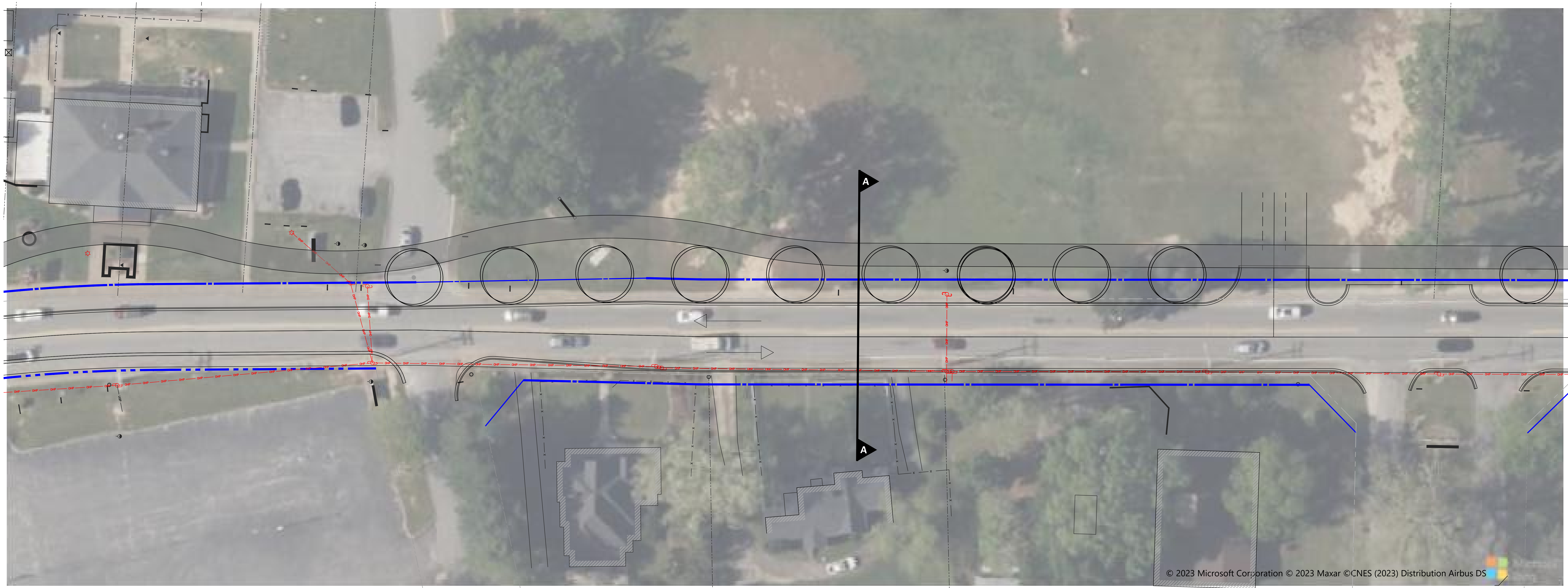
EAST CURTIS STREET, PROPOSED SECTION:
SECTION A-A

SCALE: 1" = 10'



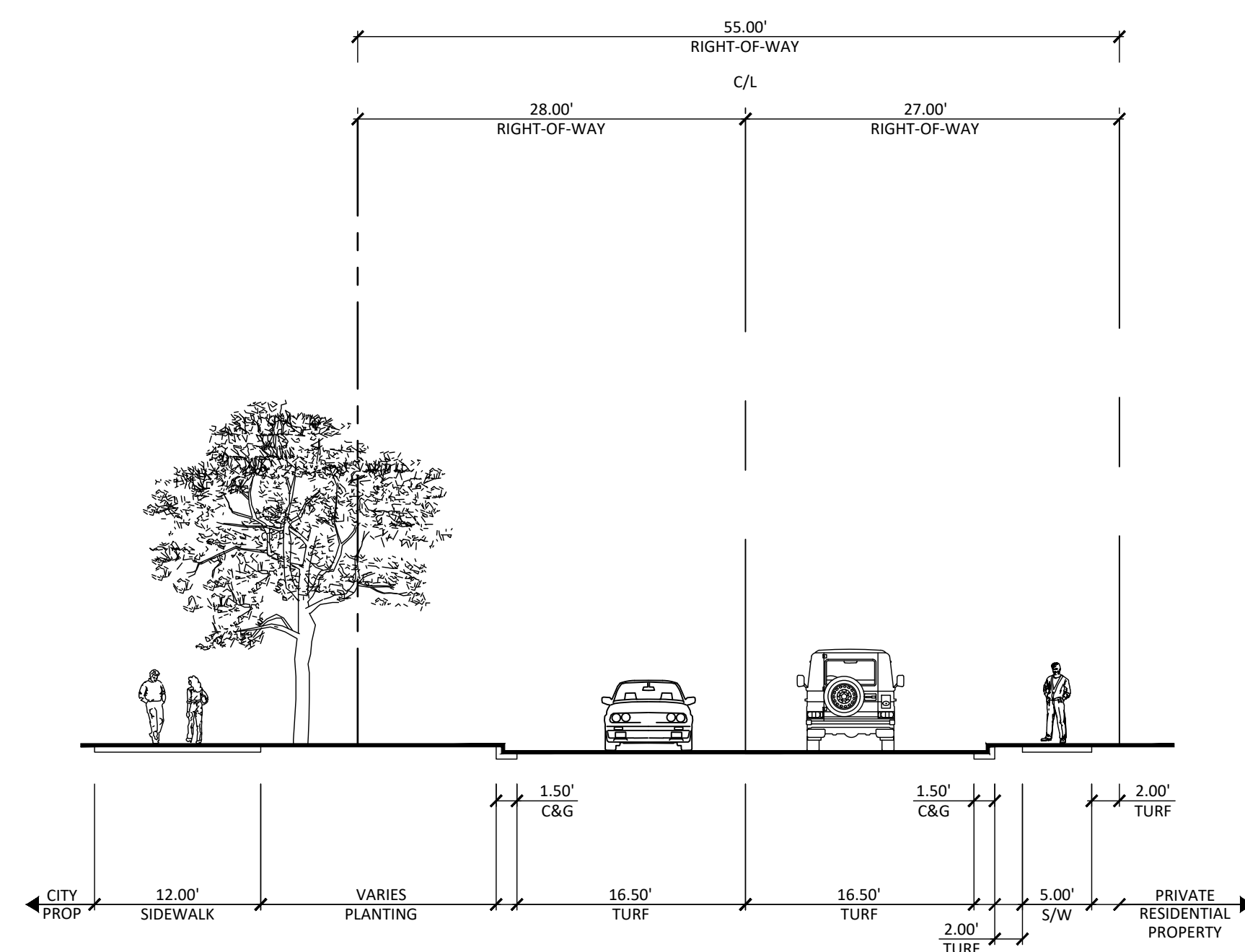
VICINITY MAP

N.T.S.

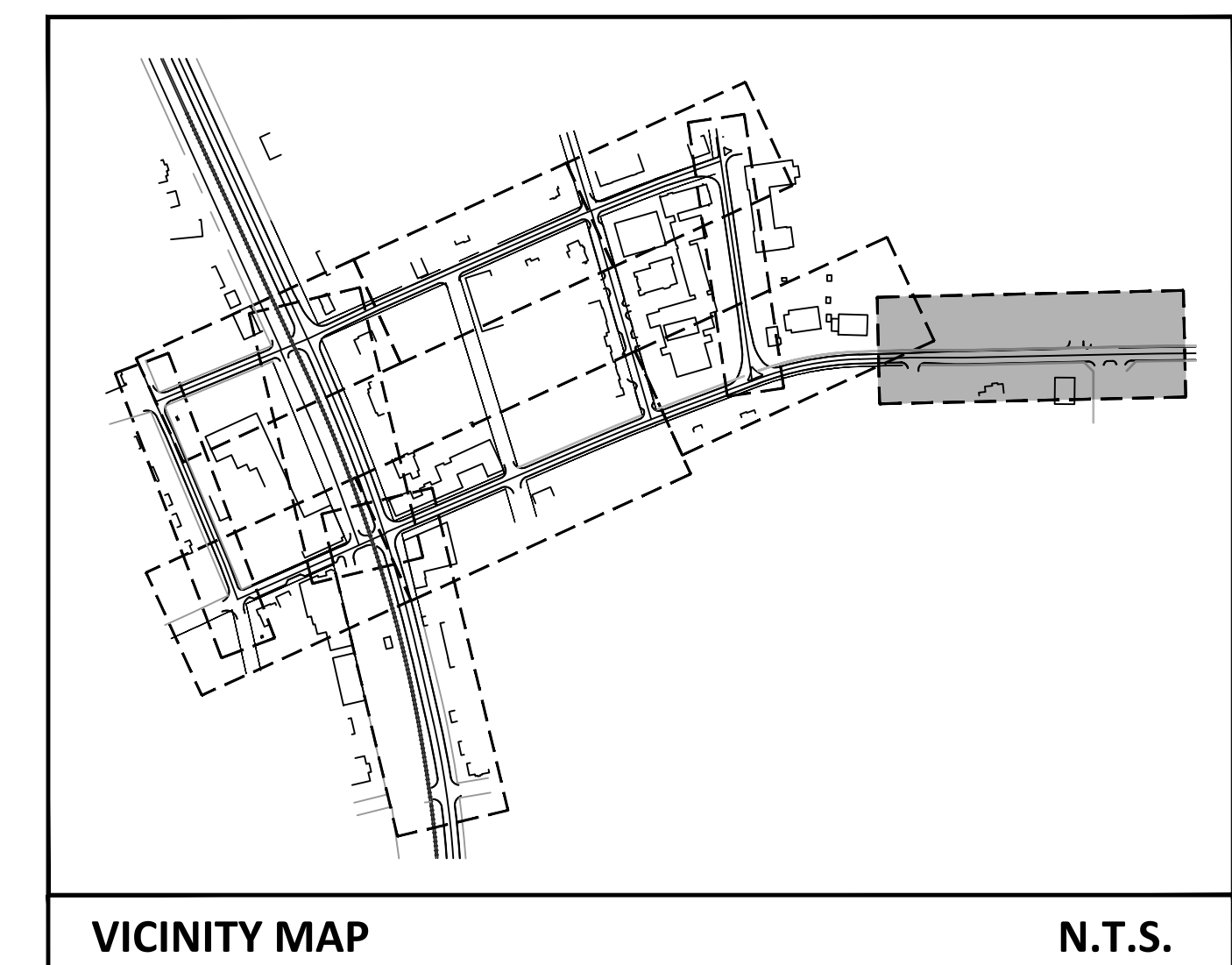


© 2023 Microsoft Corporation © 2023 Maxar © CNES (2023) Distribution Airbus DS

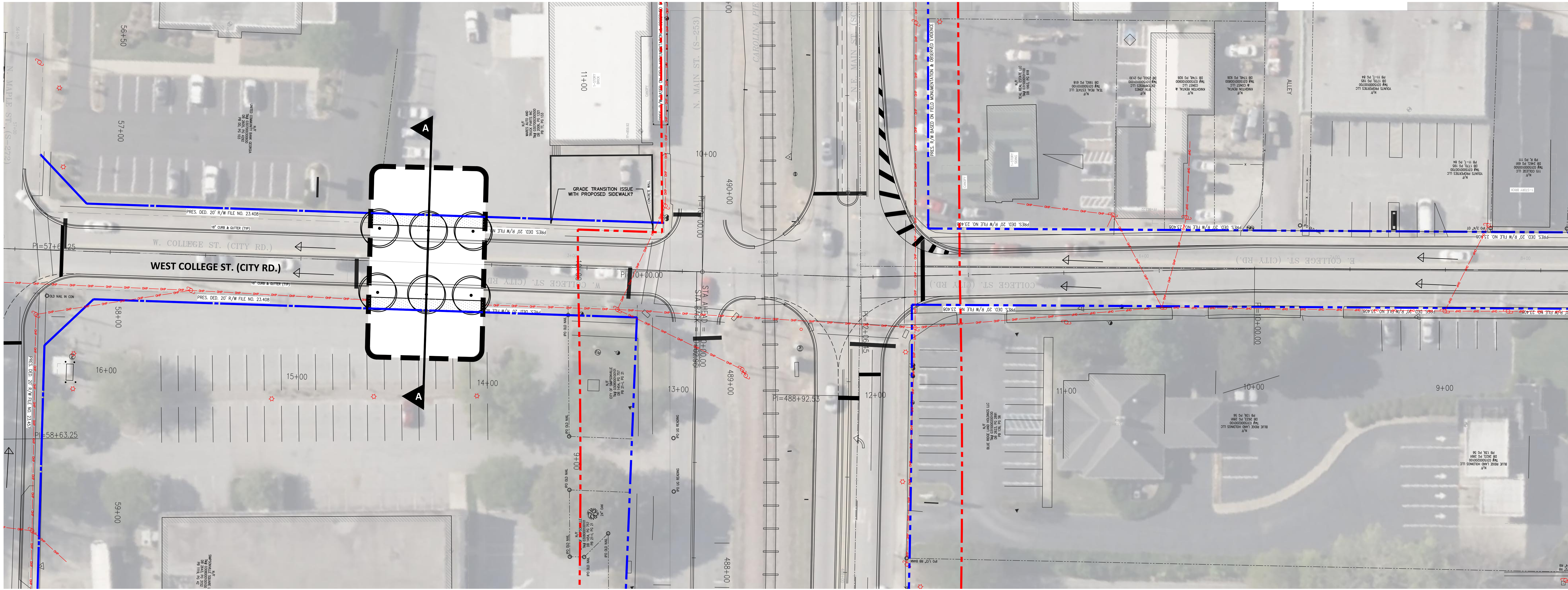
EAST CURTIS STREET, STA: 13 + 00 - 21 + 00



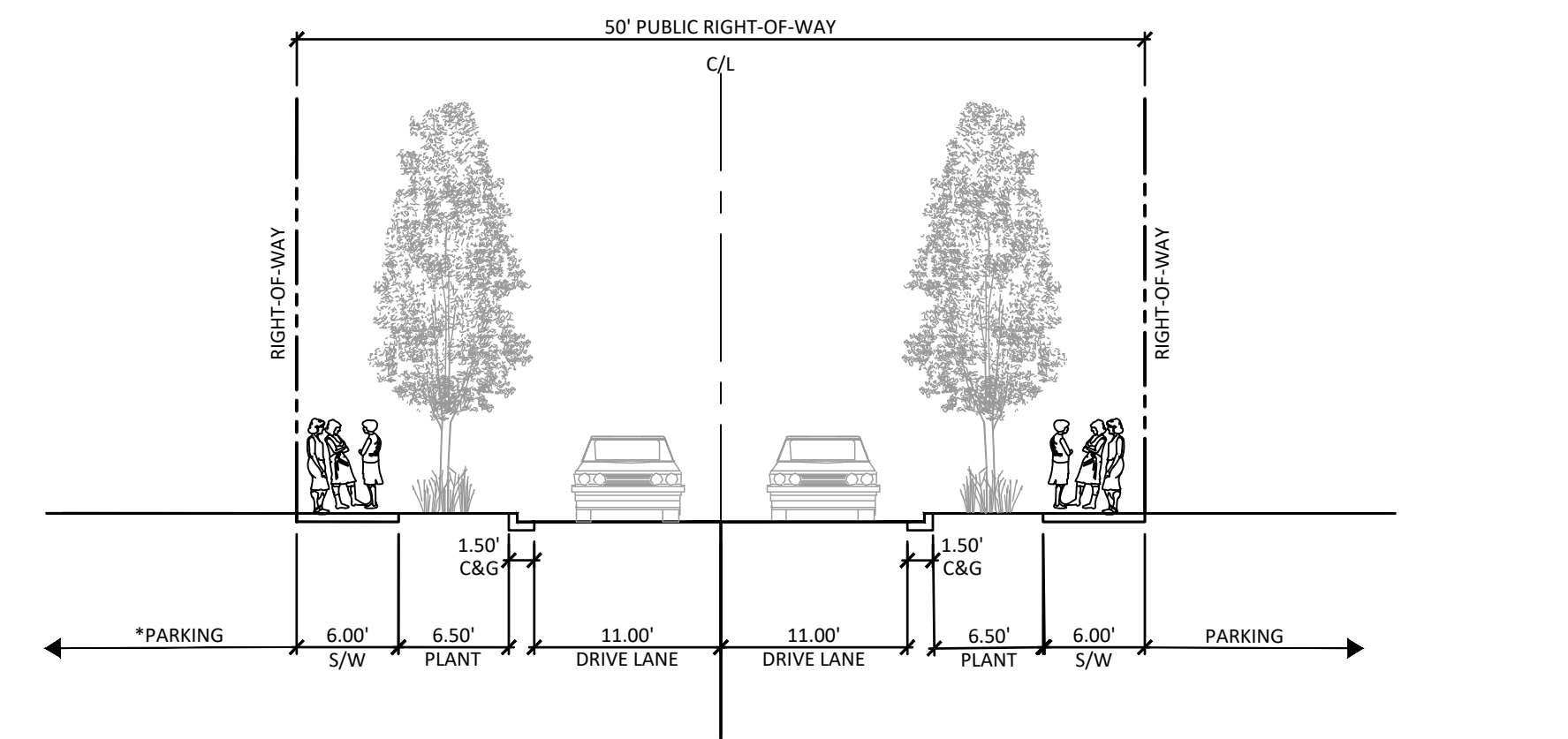
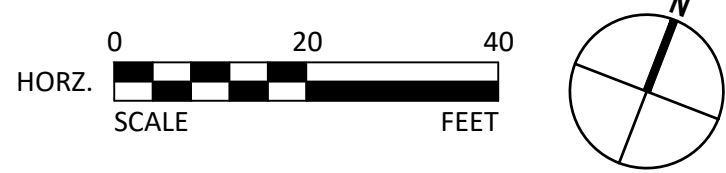
EAST CURTIS STREET, PROPOSED SECTION:
SECTION A-A
NOTE: EAST CURTIS PLAN DOES NOT INCLUDE FUTURE 2' ROADWAY SHIFT. PROPOSED STREET SECTION IMPLEMENTS THE 2' FUTURE ROADWAY SHIFT. SCALE: 1" = 10'



SIMPSONVILLE STREETSCAPE
EAST CURTIS STREET TYPICAL CROSS SECTIONS
 SIMPSONVILLE, SOUTH CAROLINA
 10.18.23

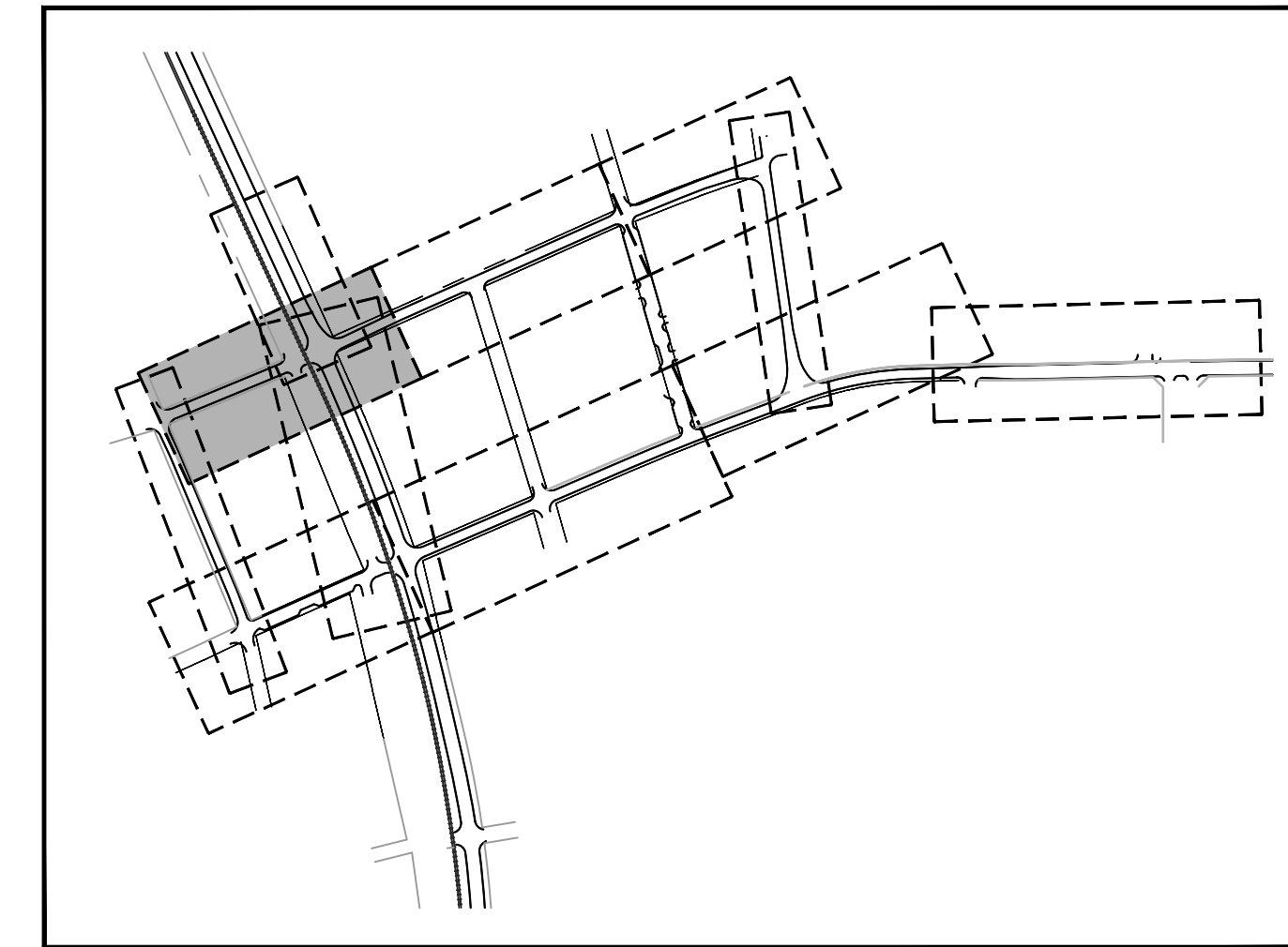


WEST COLLEGE & EAST COLLEGE STREET, STA: 57 + 63.75 - 10 + 00



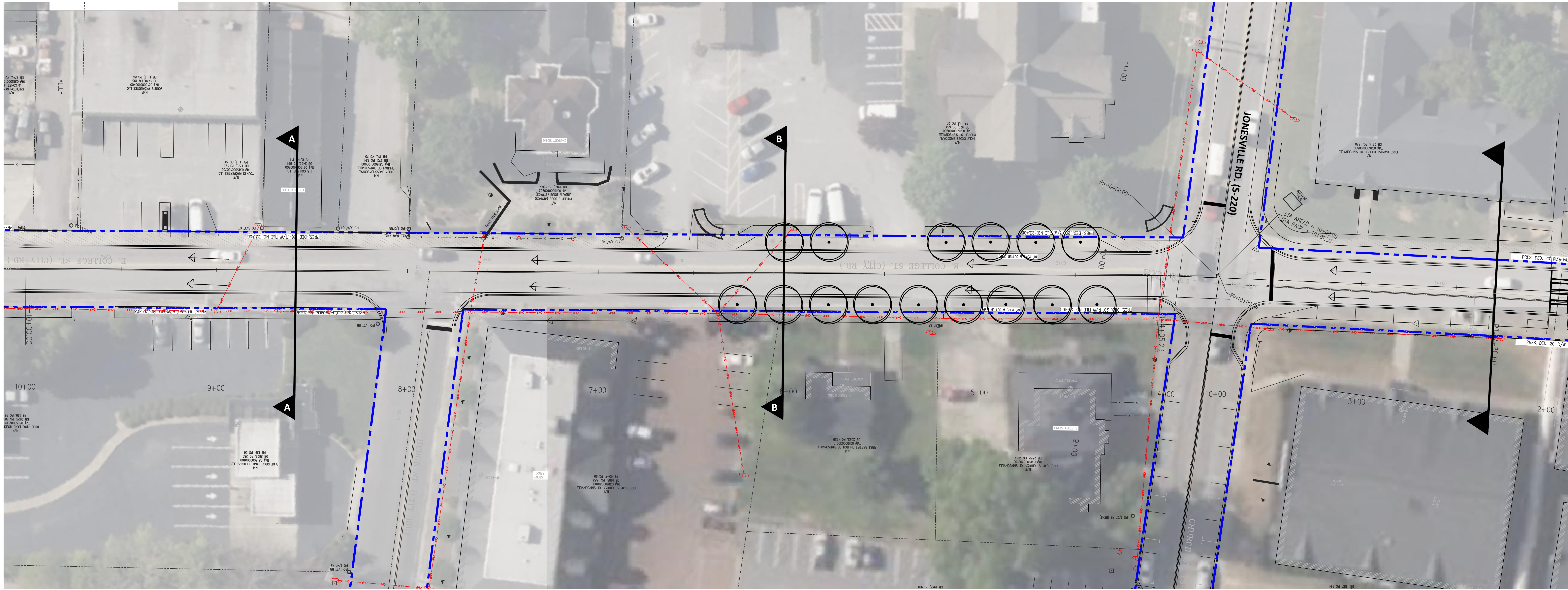
WEST COLLEGE & EAST COLLEGE STREET, PREFERRED:
SECTION A-A
SCALE: 1" = 10'

WEST COLLEGE & EAST COLLEGE STREET, PREFERRED NOTES:
#P.P. TO BE RELOCATED

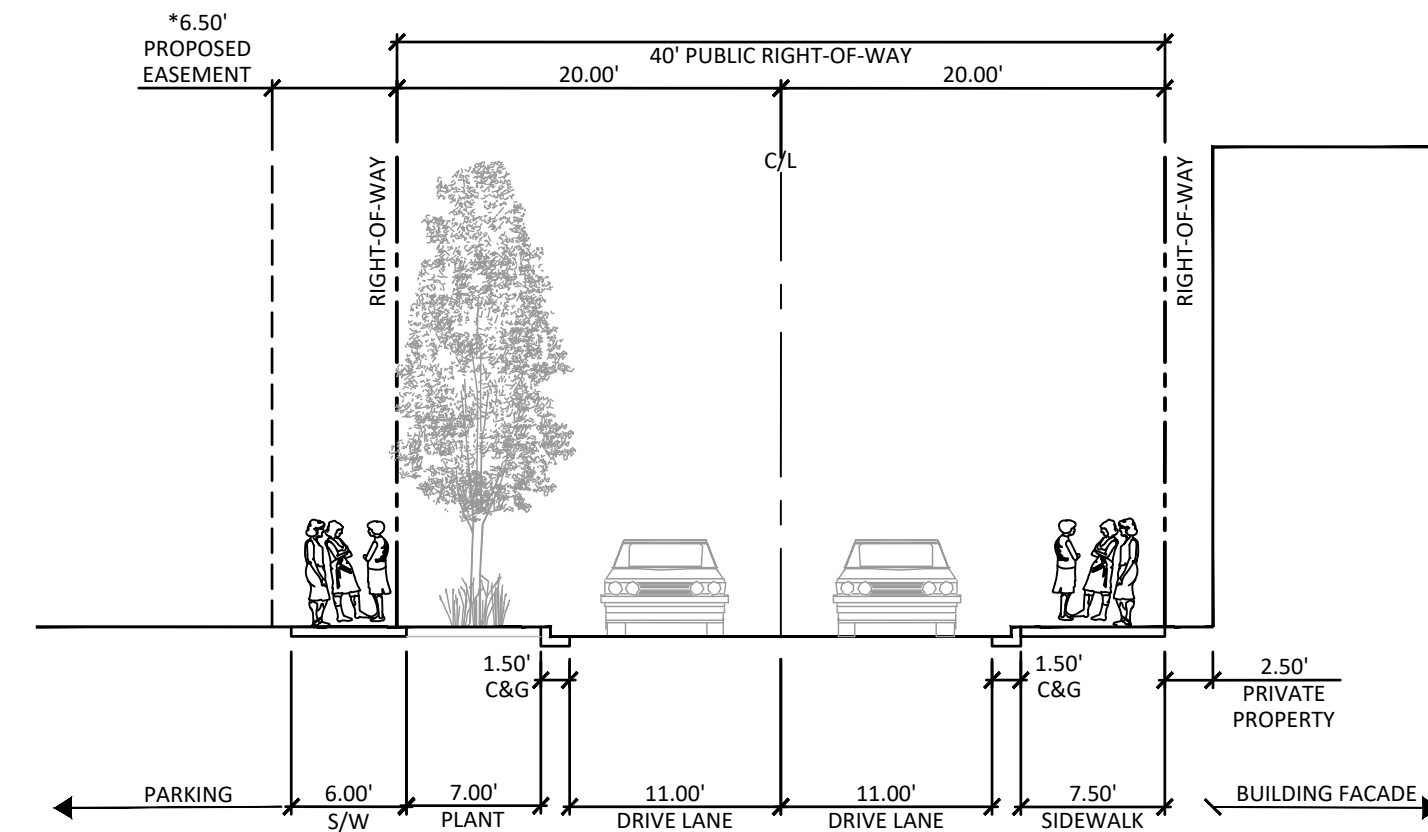


VICINITY MAP N.T.S.

SIMPSONVILLE STREETSCAPE
WEST COLLEGE STREET TYPICAL CROSS SECTIONS
SIMPSONVILLE, SOUTH CAROLINA
10.18.23

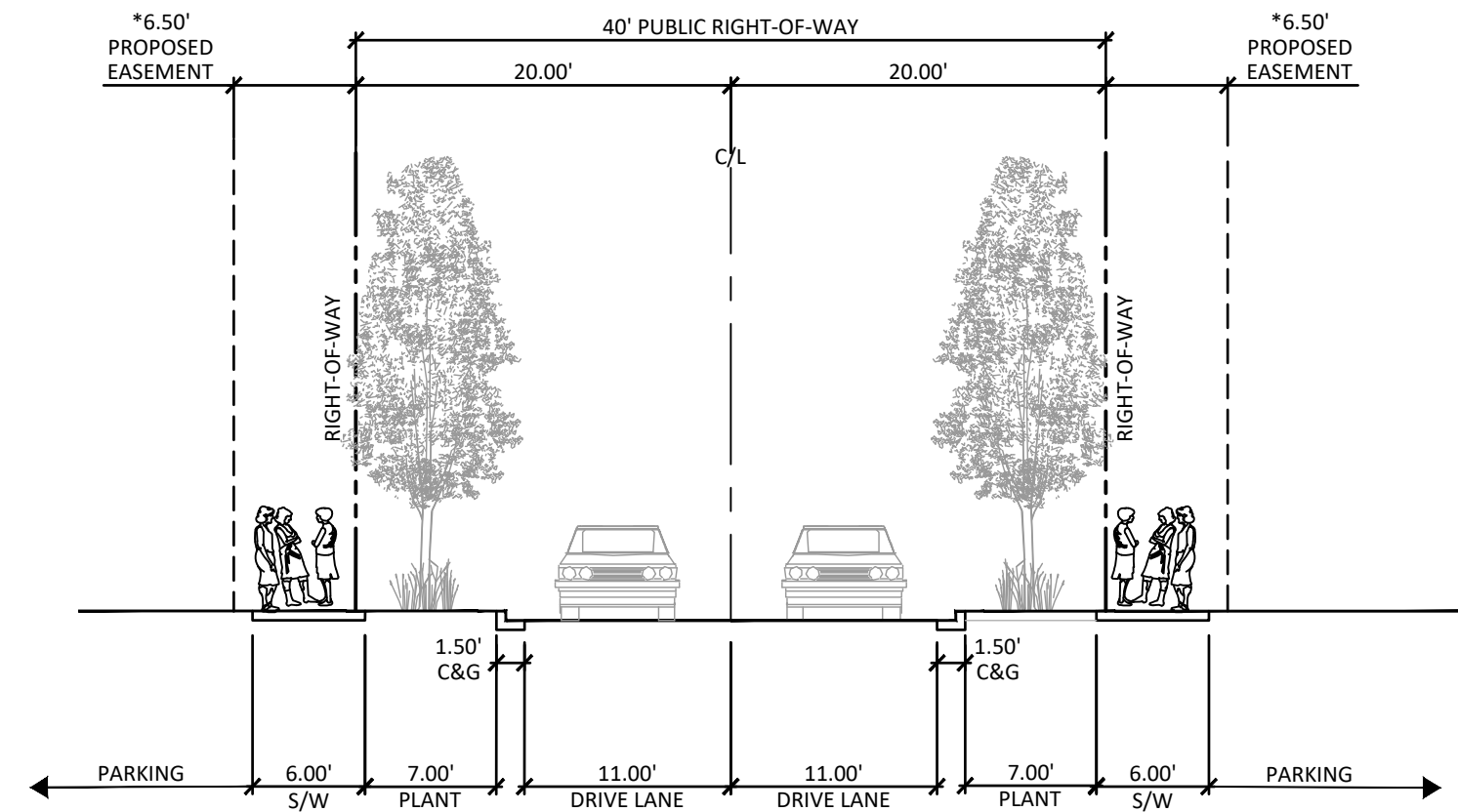


WEST COLLEGE & EAST COLLEGE STREET, STA: 10 + 00 - 4 + 5.23



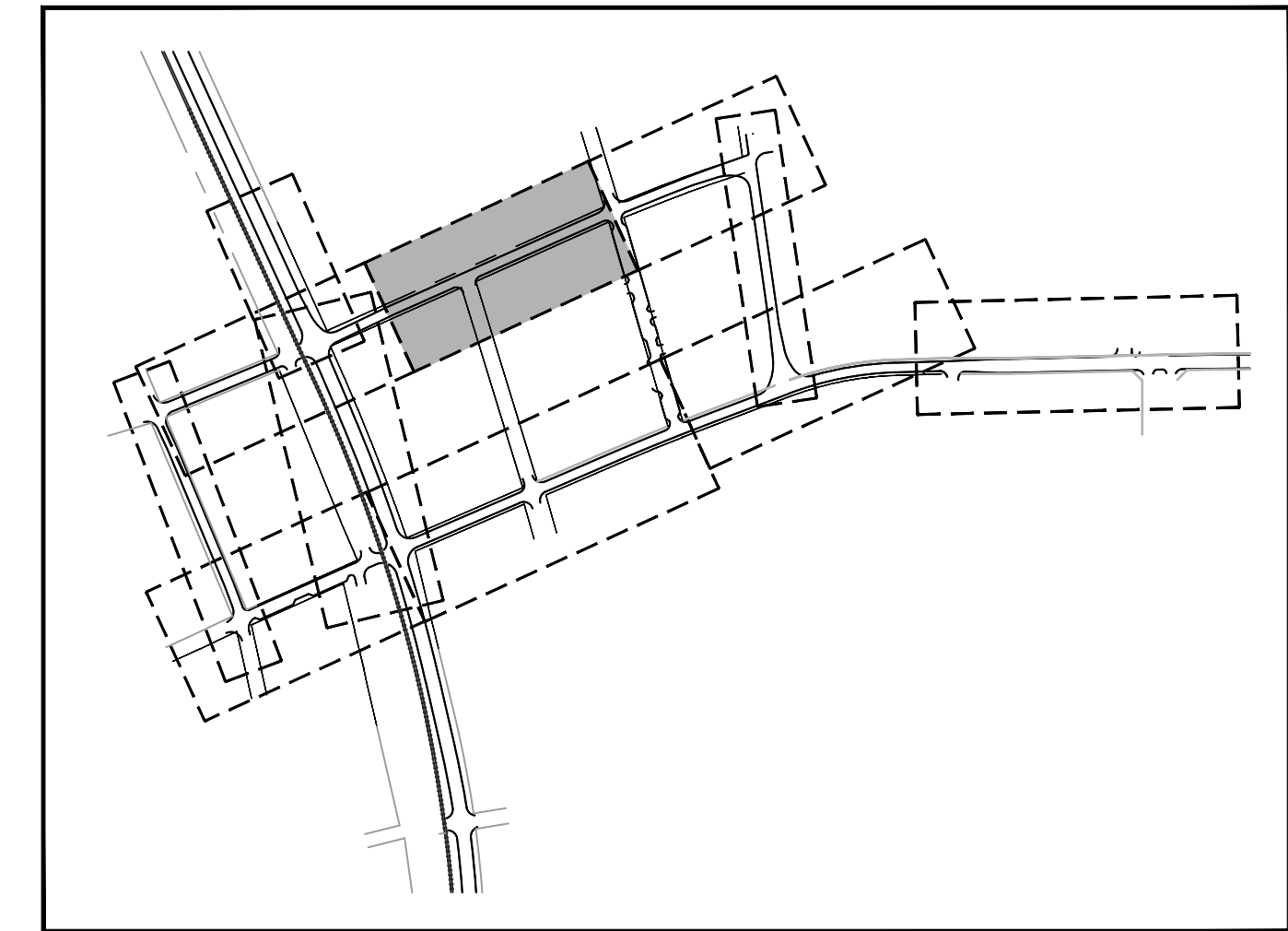
WEST COLLEGE & EAST COLLEGE STREET, PREFERRED:
SECTION A-A SCALE: 1" = 10'

WEST COLLEGE & EAST COLLEGE STREET, PREFERRED NOTES:
* LIMITS OF PROPOSED SIDEWALK MATCH EXISTING SIDEWALK LIMITS



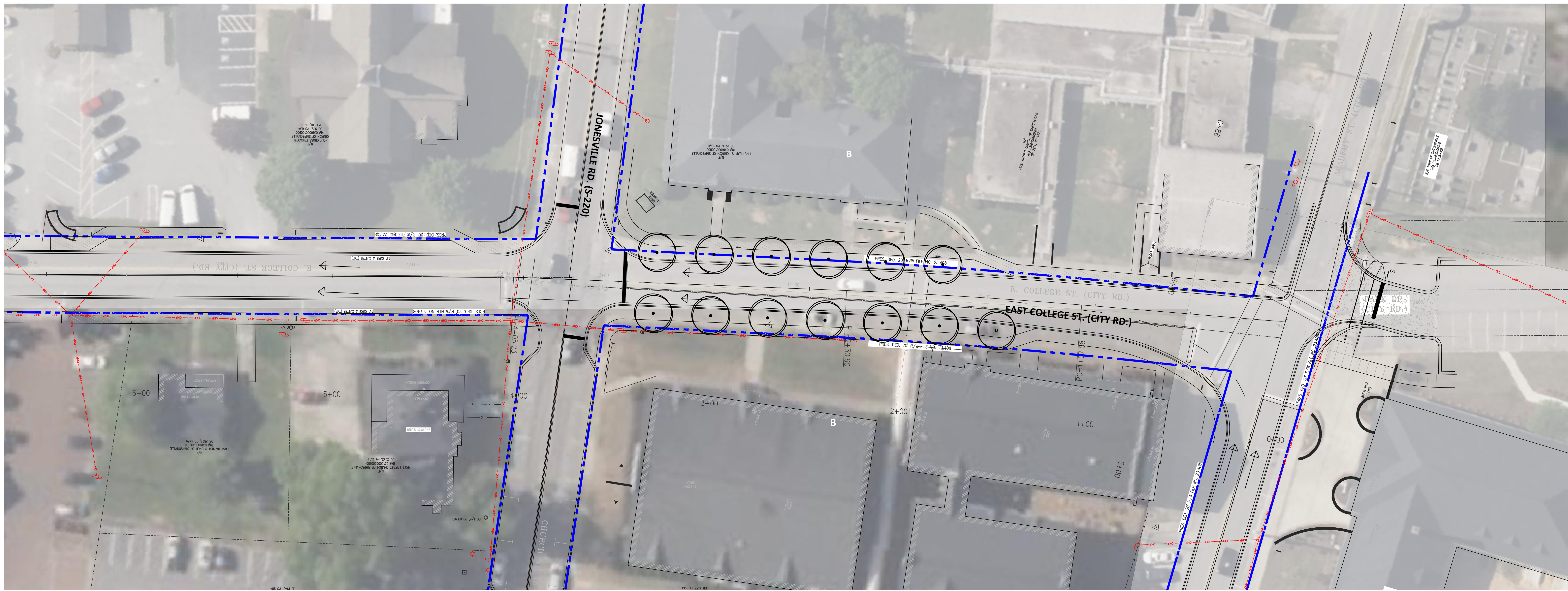
WEST COLLEGE & EAST COLLEGE STREET, PREFERRED:
SECTION B-B SCALE: 1" = 10'

WEST COLLEGE & EAST COLLEGE STREET, PREFERRED NOTES:
* LIMITS OF PROPOSED SIDEWALK MATCH EXISTING SIDEWALK LIMITS

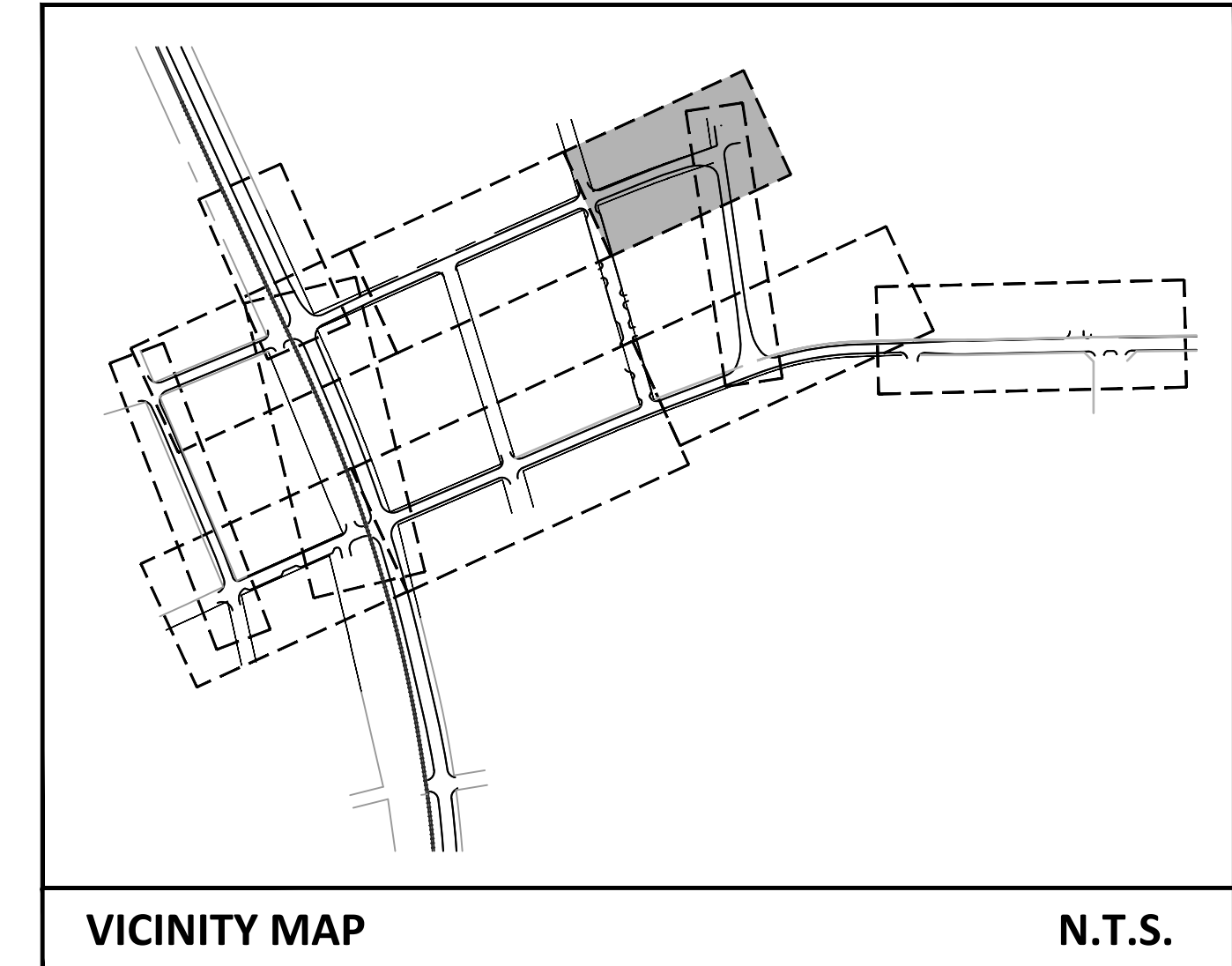
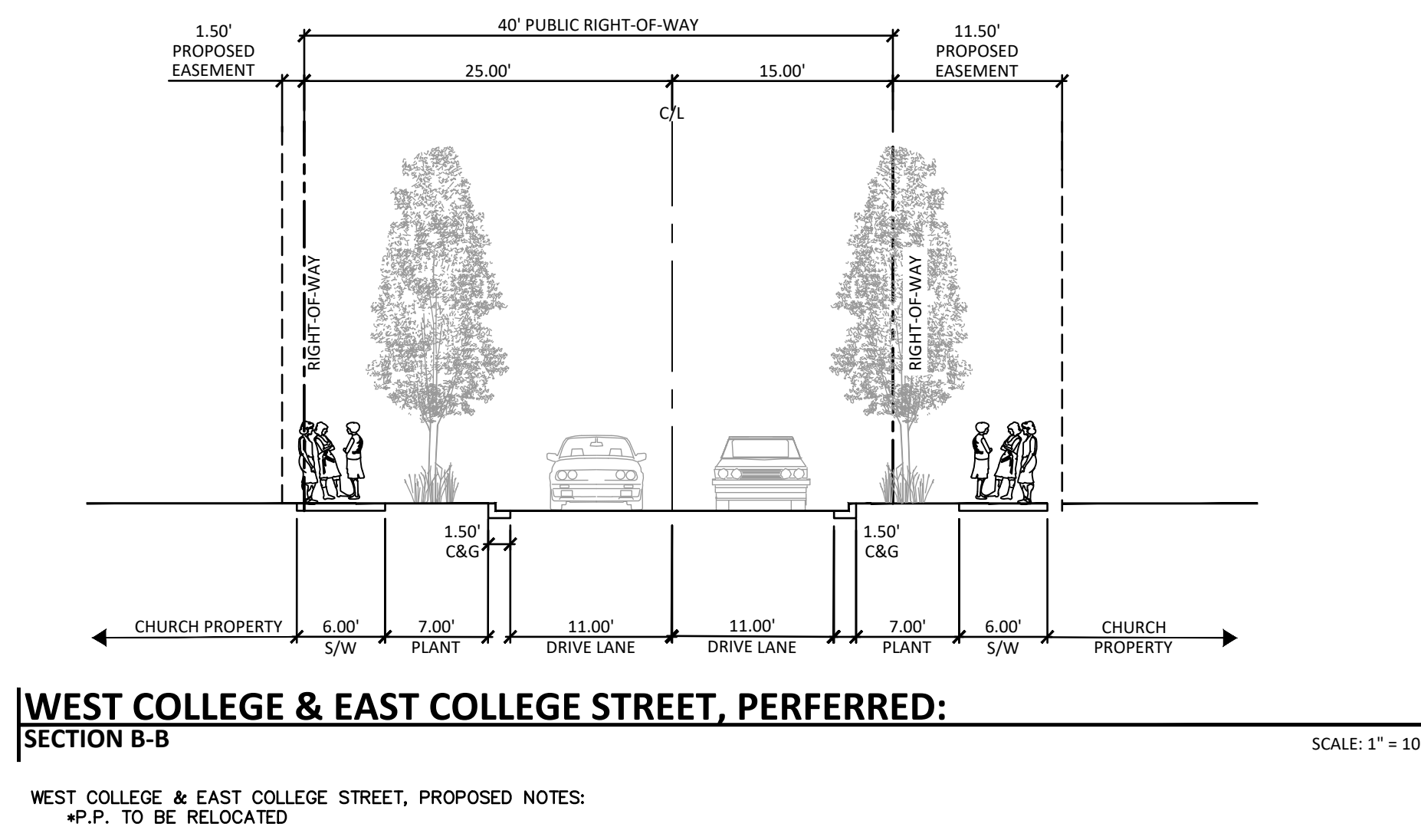
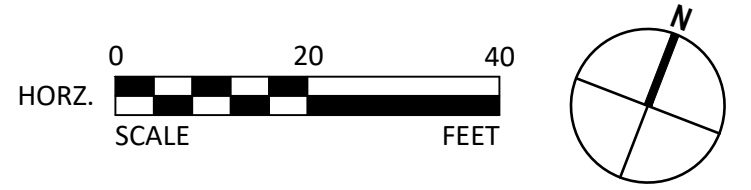


VICINITY MAP N.T.S.

SIMPSONVILLE STREETScape
EAST COLLEGE STREET TYPICAL CROSS SECTIONS
 SIMPSONVILLE, SOUTH CAROLINA
 10.18.23

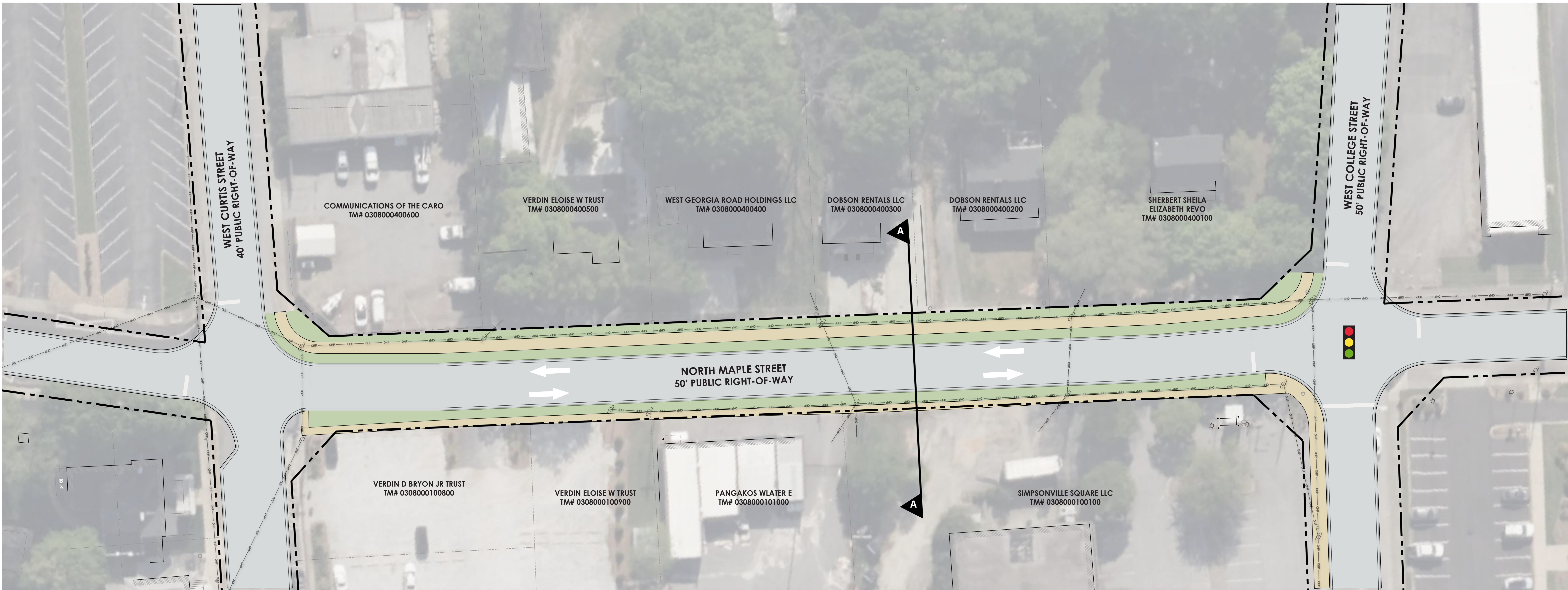


WEST COLLEGE & EAST COLLEGE STREET, STA: PI=12+83.59 - 16+57

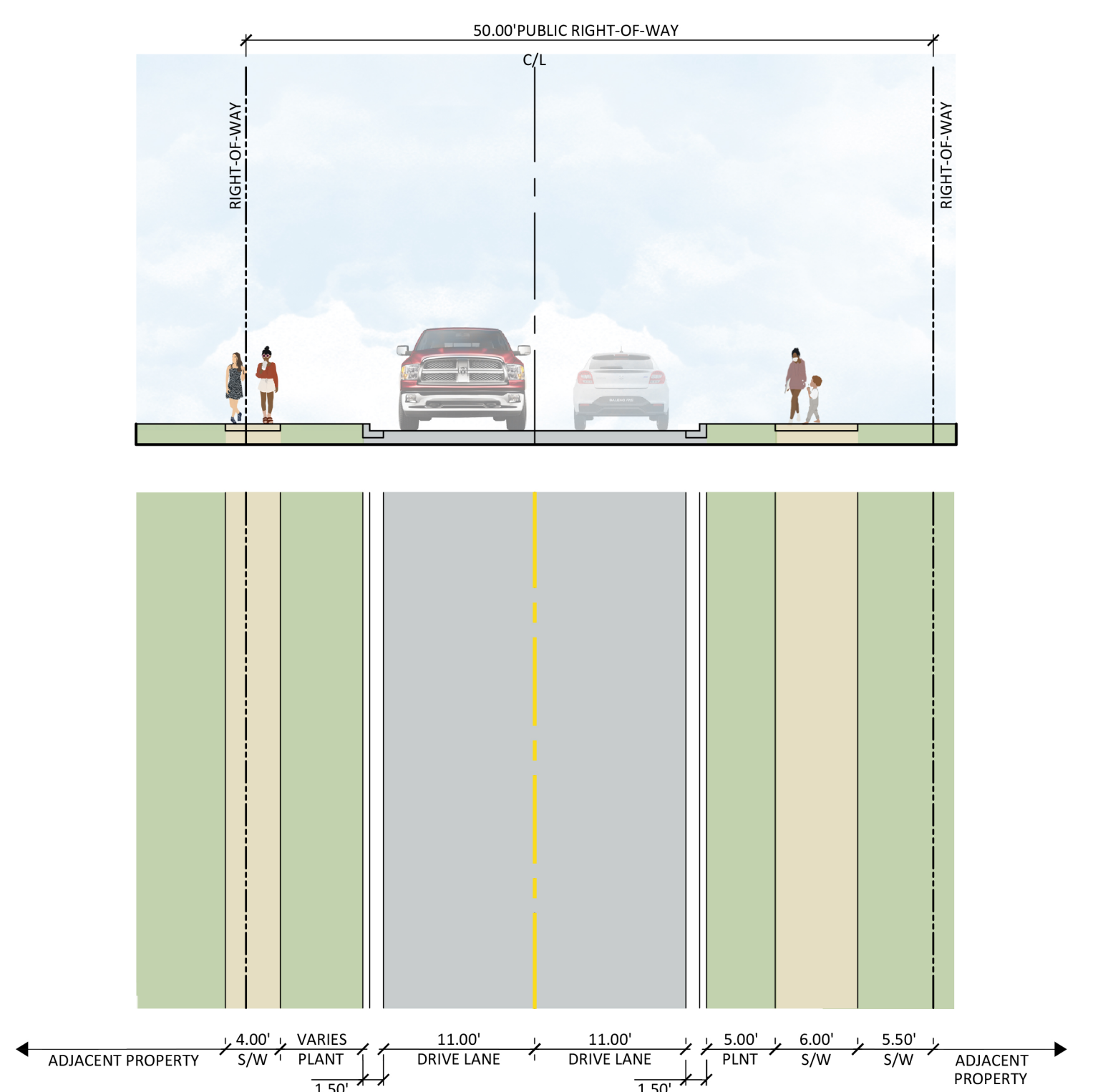
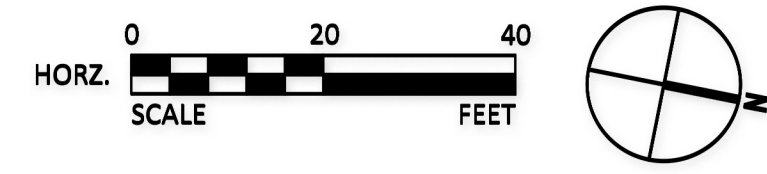


VICINITY MAP N.T.S.

SIMPSONVILLE STREETSCAPE
 EAST COLLEGE STREET TYPICAL CROSS SECTIONS
 SIMPSONVILLE, SOUTH CAROLINA
 10.18.23



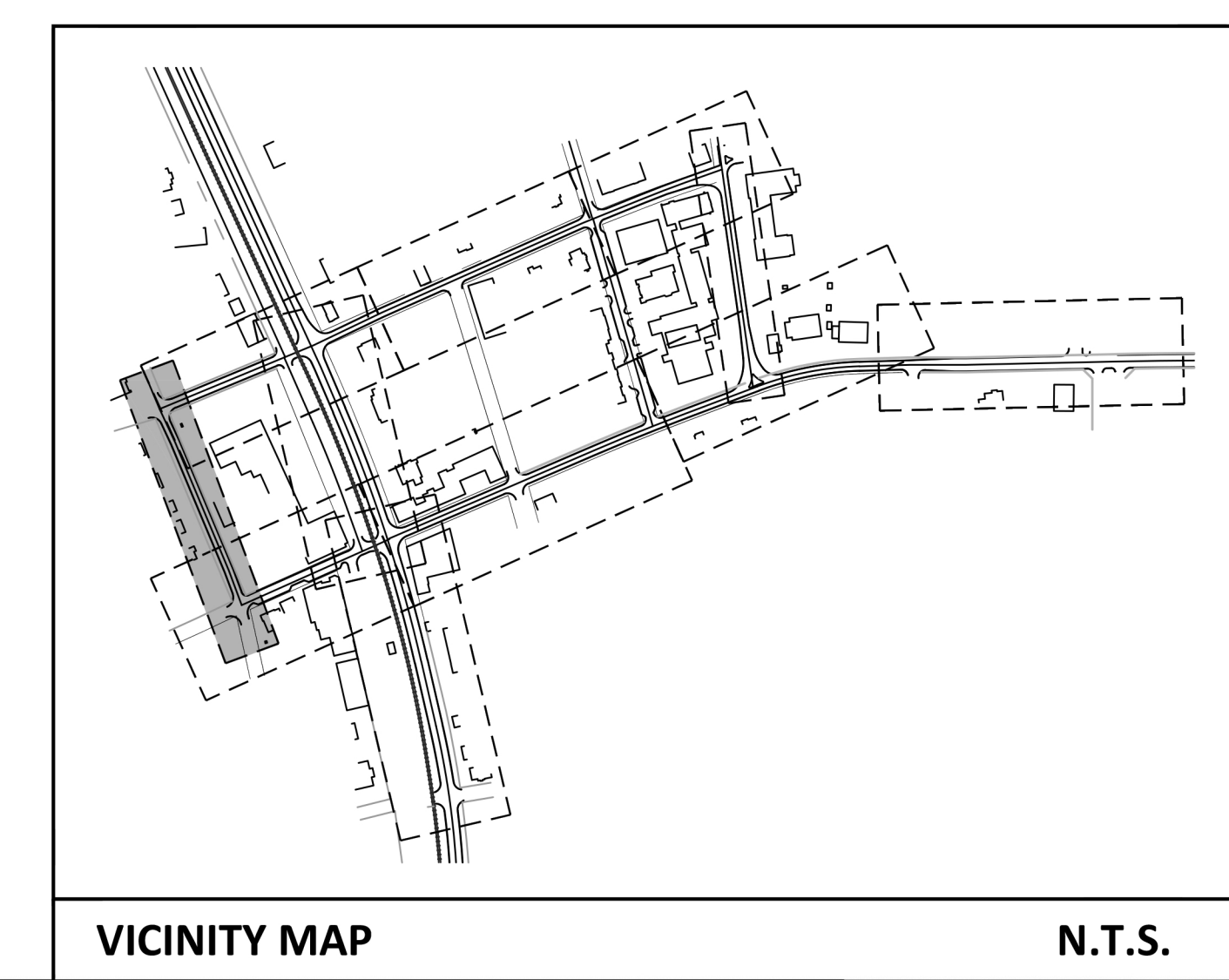
NORTH MAPLE STREET, STA: 63 + 00 - 58 + 00



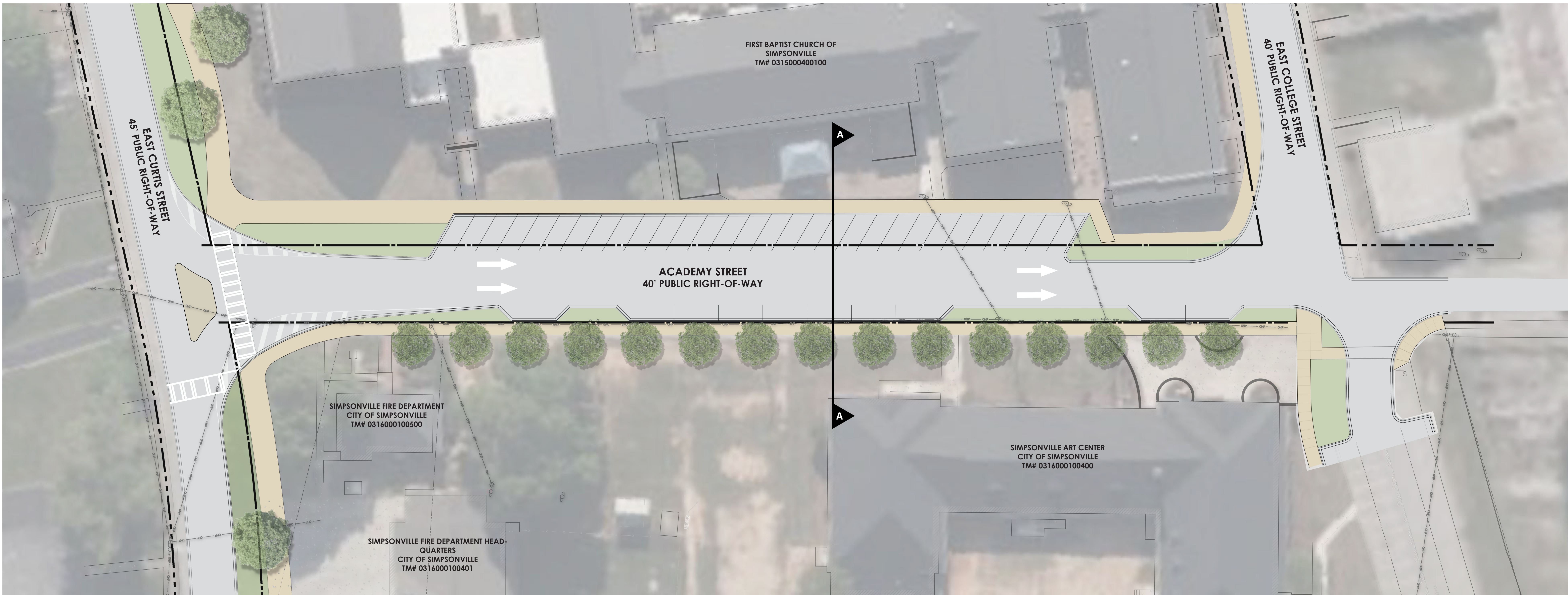
NORTH MAPLE STREET, PROPOSED STREET SECTION:
SECTION A-A

NOTE:
POWER POLES TO BE RELOCATED
SIDEWALK ON EAST SIDE OF NORTH MAPLE STREET TO MATCH EXISTING SIDEWALK LOCATION - NO EASEMENT NEEDED

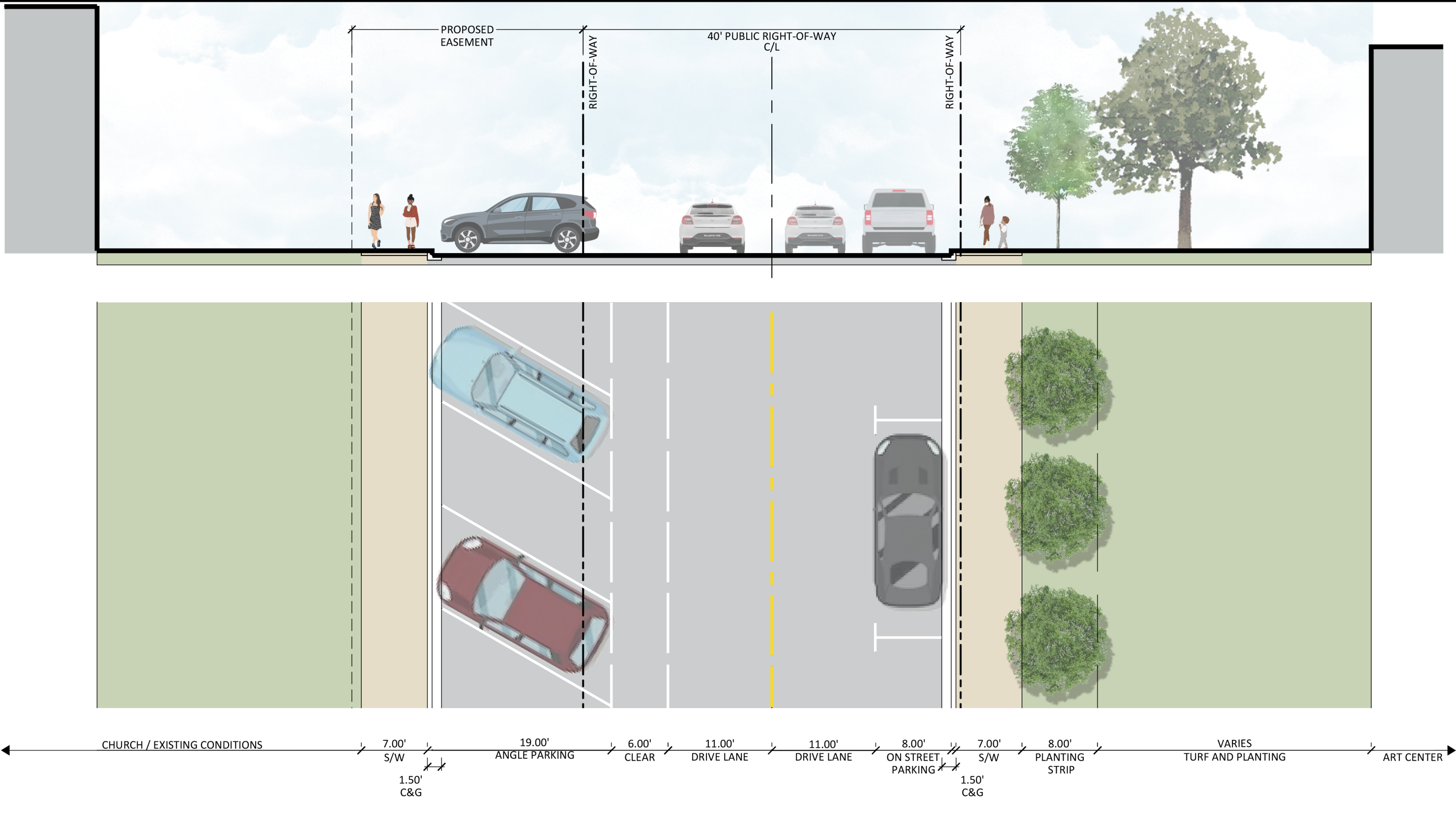
SIMPSONVILLE STREETSCAPE
NORTH MAPLE STREET TYPICAL CROSS SECTIONS
SIMPSONVILLE, SOUTH CAROLINA
10.18.23



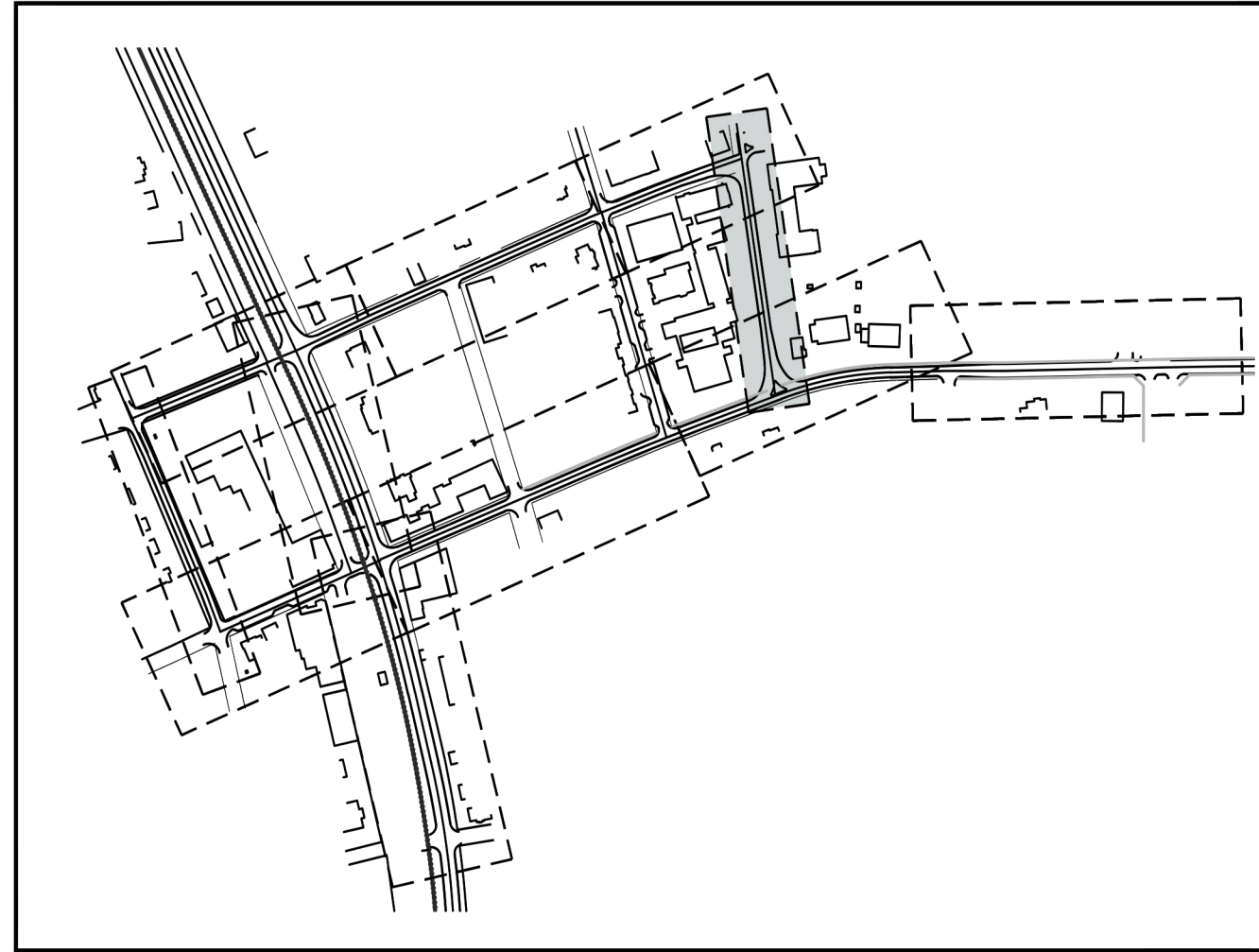
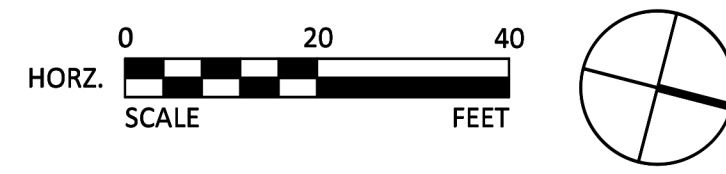
VICINITY MAP N.T.S.



ACADEMY STREET, STA: 0 + 00 - 6 + 86



ACADEMY STREET - PROPOSED STREETSCAPE
SECTION A-A
SCALE: 1" = 10'



VICINITY MAP
N.T.S.

SIMPSONVILLE STREETSCAPE
ACADEMY STREET TYPICAL CROSS SECTIONS
SIMPSONVILLE, SOUTH CAROLINA
10.18.23